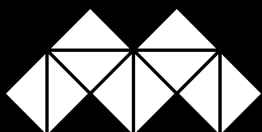




*VersaLite Stone*TM

EXQUISITE NATURAL STONE VENEERS

MADE LIGHT | MADE EASY



maniscalco

VersaLite Stone™ is real stone veneer that is light, flexible, and versatile enough to use virtually anywhere.

- 100% natural stone veneers
- Hand split and tooled surface for most natural looking product
- Use indoors or outdoors
- Waterproof
- Can be applied to virtually any surface
- 2mm thin = two stacked dimes
- Flexible yet strong – can even be used on curved surfaces
- 20 times lighter than regular stone tile – easy to handle / carry / transport / store
- Easy to cut with scissors, sheers or wet saw
- Simple and fast to install = labor savings
- Can be grouted or butt joined
- Requires stone sealers or enhancers (seal before installation)
- Up to 1500 sq.ft. per pallet – ultra thin and light means massive savings on transportation and storage allocation
- German technology / engineering / R&D / high quality




95% less stone produced compared to traditional stone surfaces saves on energy and transportation costs making VersaLite Stone™ an environmentally positive choice.

FEATURE WALLS
CURVED WALLS
PILLARS
PARTITIONS
DOORS
FIREPLACES
LIGHT-DUTY RESIDENTIAL FLOORS
KITCHENS
BACKSPLASHES
CABINETS
FURNITURE
OFFICES
BARS
BOATS
RV'S
OUTDOOR KITCHENS
"TINY HOUSE" APPLICATIONS
WATER FEATURES
APPLIANCE FACING
BATHROOMS
SHOWERS
SPAS
RESTAURANTS
MULTI-FAMILY HOUSING
DORM ROOMS
COMMERCIAL DÉCOR
EXTERIOR SURFACING



Each veneer sheet is unique to itself with dramatic texture. The natural cleft of the stone is revealed during production of every piece of VersaLite Stone™.

VersaLite Stone™



VersaLite Stone's grandeur lies in its large, true stone pattern, texture and color tones; *beauty that can only be created in nature.*

OPTIONS

1

NATURAL STONE
VENEER PANELS



2

FABRIC BACKED
PANELS



3

BACK-LITE
TRANSLUCENT
STONE PANELS



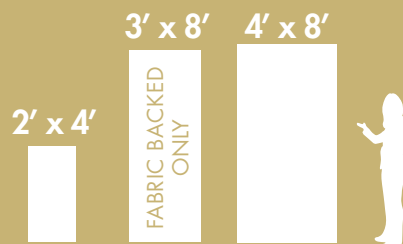
24 different color and
texture ranges,
12 stocked
in most sizes

STOCKING PROGRAM

NATURAL STONE VENEER PANELS 2MM
12 Colors – 24" x 48" and 48" x 96"

FABRIC BACKED PANELS 1MM
12 Colors – 36" x 96"

BACK-LITE STONE VENEER PANELS 2MM
4 Colors – 24" x 48"



* Tiles or panels can be made into any size under 48" x 96"



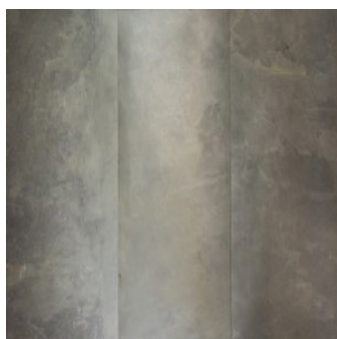
VersaLite Stone™

NATURAL STONE VENEER PANELS

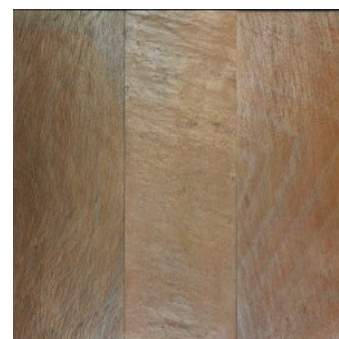
STOCKED COLORS



AUTUMN RUSTIC



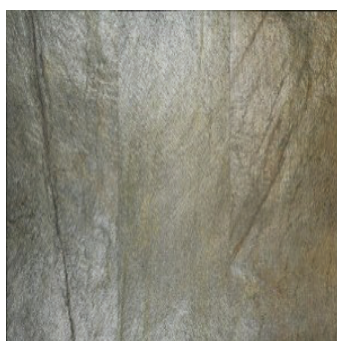
CALIFORNIA GOLD / FOREST



COPPER



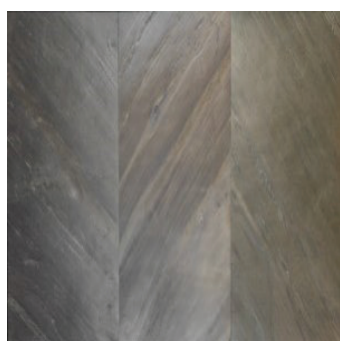
INDIAN AUTUMN LIGHT



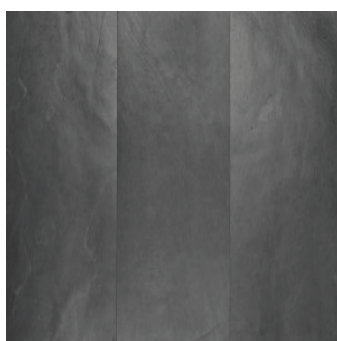
SILVER SHINE GOLD



SILVER SHINE



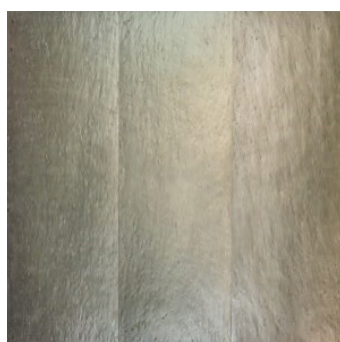
BLACK LINE



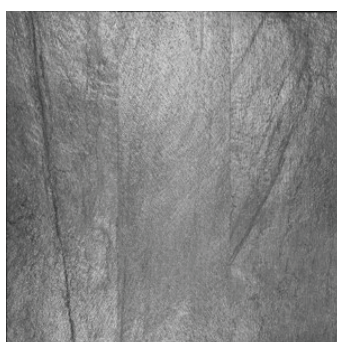
BLACK STAR



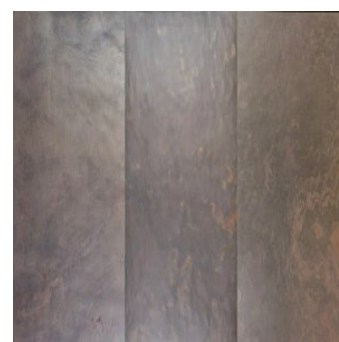
GOLD GREEN



OCEAN GREEN



SILVER



MULTI-COLOR

VersaLite Stone™



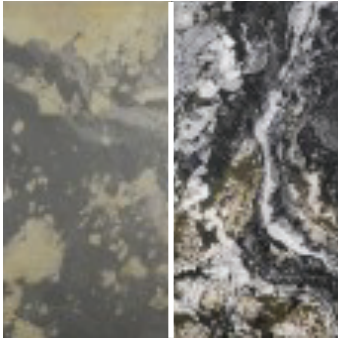
VersaLite Stone™

BACK-LITE TRANSLUCENT STONE VENEER PANELS

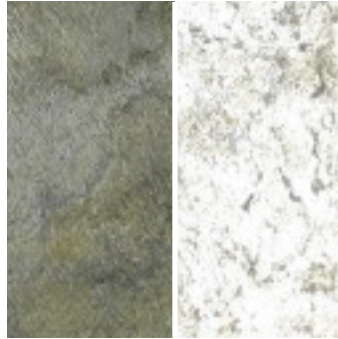
STOCKED COLORS



Left is standard, right is Back-Lite



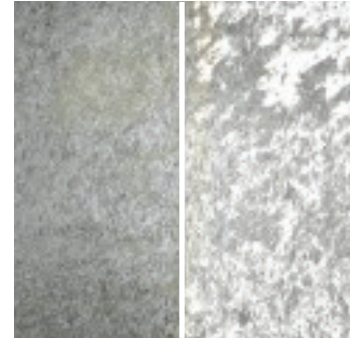
AUTUMN RUSTIC
BACK-LITE



OCEAN GREEN
BACK-LITE



INDIAN AUTUMN LIGHT
BACK-LITE



SILVER SHINE
BACK-LITE



VersaLite Stone™



VersaLite Stone™