

SLATE PRODUCT SPECIFICATION

GLAZED FLOOR TILE 60x60cm

Pressed Ceramic Tiles International Norms ISO 13006-10545/98

GROUP: B1b

No.	Icon	Test item	Unit	Requirements of Standard	Test result	Result	
1		Dimensional variation	(%)	length of side	0.6	< 0.6	Qualified
2		Side straightness	(%)	± 0.5		< 0.5	Qualified
3		Squareness	(%)	± 0.6		< 0.5	Qualified
4		Surface flatness	(%)	Center curvature degree	± 0.5	< 0.5	Qualified
				Warping degree	± 0.5	< 0.5	Qualified
				Side curvature degree	± 0.5	- 0.1	Qualified
5		Surface quality	—	Sighting vertically at a distance of 0.8 meter away from the tile no defect on surface is observed in at least 95% of the tile	conformed	Qualified	
6		Water absorption	(%)	Average value ≤ 3 individual ≤ 3.3		< 0.28 < 0.30	Qualified
7		Breaking strength	N	When thickness ≥ 7.5mm the Average value ≥ 700		< 750	Qualified
8		Rupture modulus	Mpa	Average value ≥ 30 individual ≥ 27		> 35 > 32	Qualified
9		Abrasion resistance	revs	1700		>1700	Qualified Class 4
10		Scratch resistance	MOH	—		> 6	Qualified
11		Frost resistance	—	No cracking after test	conformed	Qualified	
12		Resistance to acids & alkalis	—	not less than grade GB	Grade GA	Qualified	
13		Chemical resistance	—	not less than grade GB	Grade GA	Qualified	
14		Slip resistance	R DCoF	Ramp slip rating test DCoF: 0.42		R11 > 0.42	Qualified

SLATE



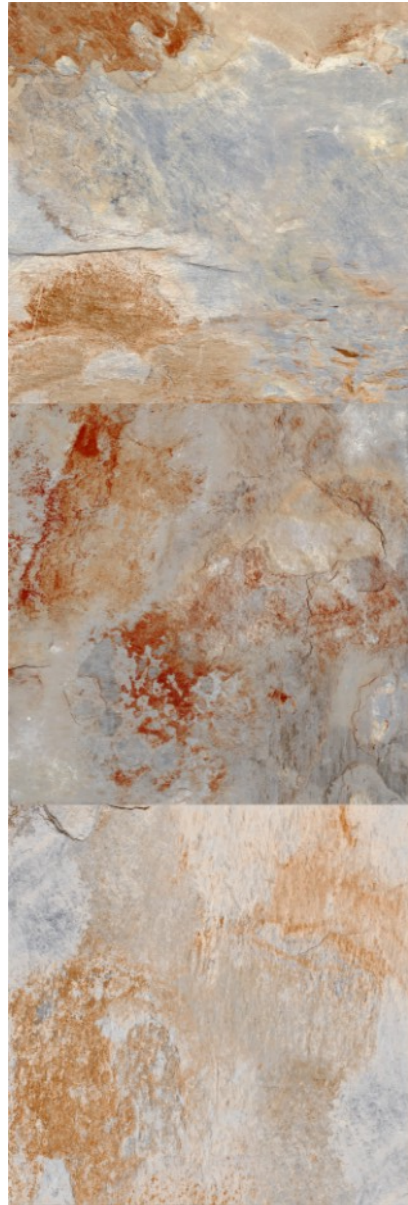
Italian ink-jet design Exterior floor tiles



maniscalco[®]
australian for mosaics[®]

KREM

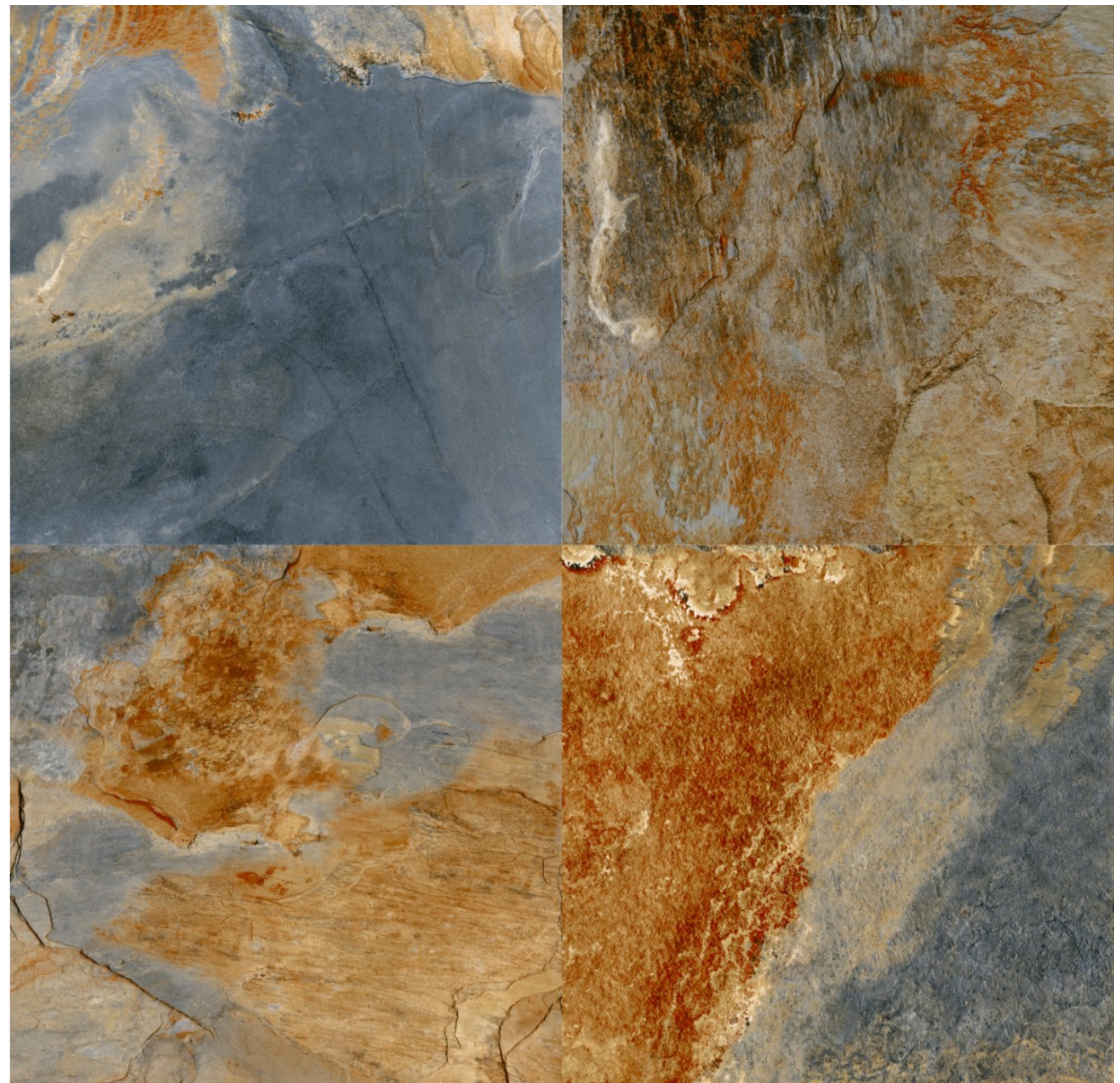
SLATE



Zeus



Aura



Apollo

SLATE is available in Interior Matt and Exterior finishes and also in 12"x24" (30x60cm)

Packaging:	4pcs. / ctn.	1.44m ² / ctn.	30kg / ctn.	1,1 x 1,1m pallet: 40ctn. / pallet	57.6m ² / pallet
600 x 600mm x 10mm	4pcs. / ctn.	15.5 sqft / ctn.	66.14 lbs / ctn.	3' 6" pallet: 40ctn. / pallet	620 sqft / pallet
24 x 24" x 0.39"					

KREM



maniscalco
australian for mosaics